

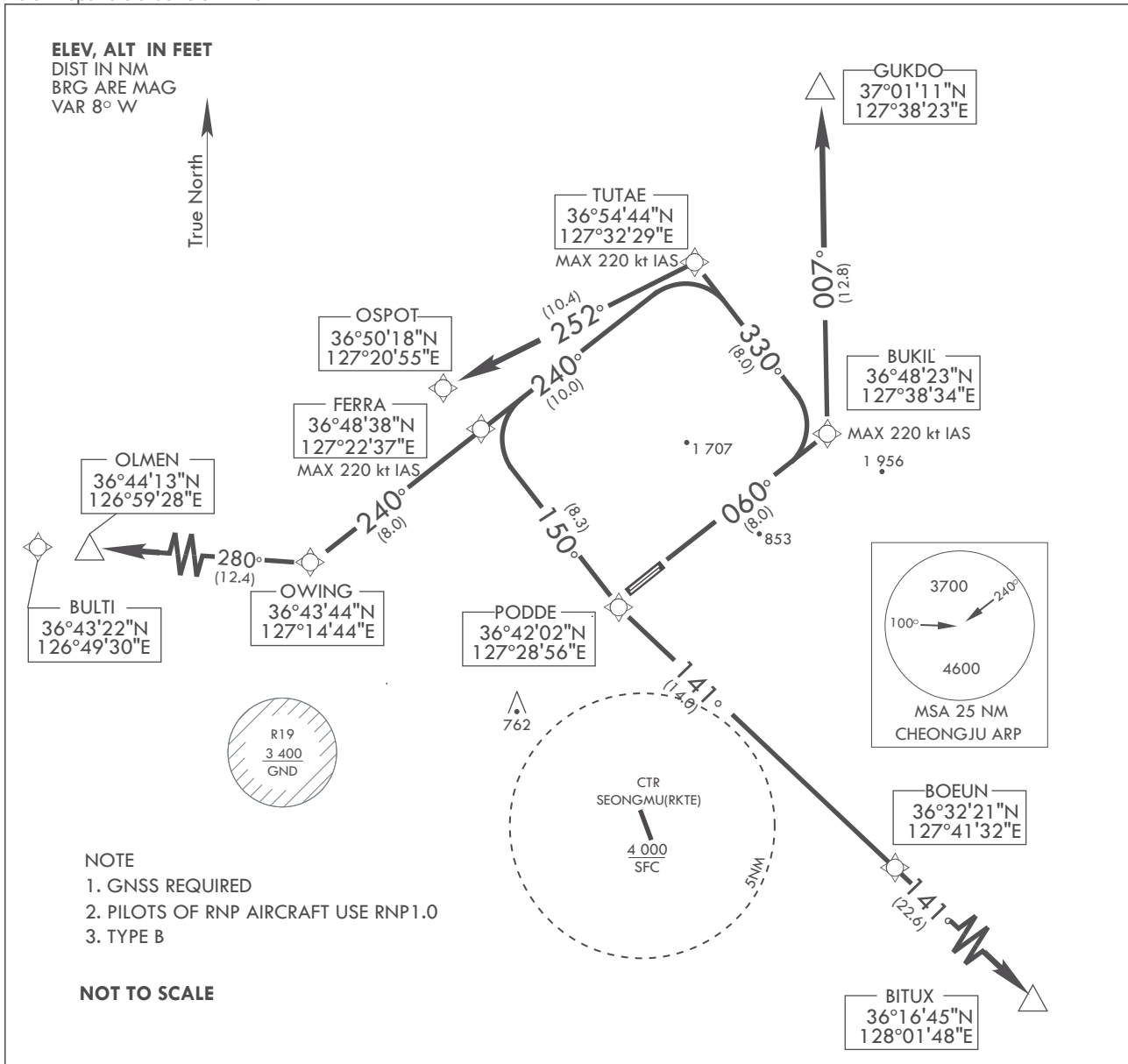
STANDARD DEPARTURE CHART
INSTRUMENT (SID)

TRANSITION ALT 14 000
TRANSITION LVL FL 140

JUNGWON DEP 129.65 292.9
CHEONGJU TWR 118.7 249.6
126.2 236.6

CHEONGJU/Cheongju INTL
RWY 6L
RNAV(GNSS)-BUKIL 1

Note : Departure under U.S. TERPS.



DEPARTURE PROCEDURE ROUTE DESCRIPTION

TAKE OFF MINIMA : RWY 06L- STANDARD WITH ATC CLIMB OF 380 ft/NM TO 8 000 ft.

TAKE OFF RWY 06L : CLIMB ON 060DEG COURSE TO BUKIL, THENCE.....
 VIA(TRANSITION). MAINTAIN 6 000 ft, EXPECTED FIELD ALTITUDE 5 MINUTES AFTER DEPARTURE.

GUKDO TRANSITION (BUKIL 1. GUKDO) : 007DEG TRACK TO GUKDO, CROSS GUKDO AT OR ABOVE 8 000 ft.

OSPOT TRANSITION (BUKIL 1. OSPOT) : 330DEG TRACK TO TUTAE, THEN VIA 252DEG TRACK TO OSPOT.

OLMEN/BULTI TRANSITION (BUKIL 1. OLMEN/BULTI) : 330DEG TRACK TO TUTAE, THEN VIA 240DEG TRACK TO OWING, THEN VIA 280DEG TRACK TO OLMEN/BULTI.

BITUX TRANSITION (BUKIL 1. BITUX) : 330DEG TRACK TO TUTAE, THEN VIA 240DEG TRACK TO FERRA, THEN VIA 150DEG TRACK TO PODDE, THEN VIA 141 DEG TRACK TO BOEUN, THEN VIA 141DEG TRACK TO BITUX.

Change : Withdrawal of A815.

INTENTIONALLY

LEFT

BLANK

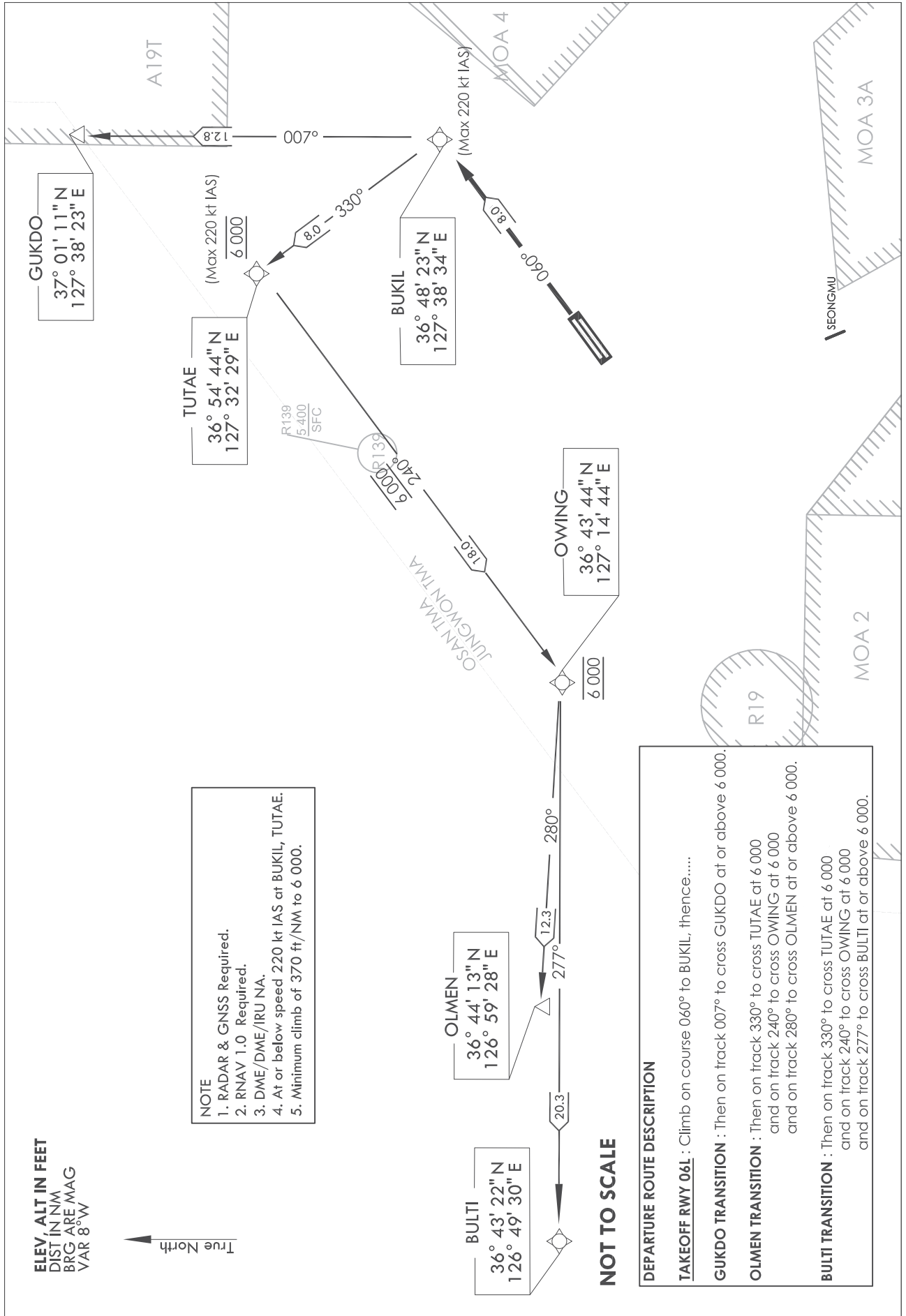
**STANDARD DEPARTURE CHART
INSTRUMENT (SID) - ICAO**

TRANSITION ALT 14 000
TRANSITION LVL FL 140

JUNGWON DEP 129.65
CHEONGJU TWR 118.7 126.2

**CHEONGJU/Cheongju INTL
RWY 06L
RNAV(GNSS)-BUKIL 2**

Note : Departure under U.S. TERPS.



CHEONGJU/Cheongju INTL(RKTU)
RWY 06L
RNAV BUKIL 2

AERONAUTICAL DATA TABULATION

Standard Instrument Departure Procedure Coding Tables

RNAV BUKIL 2 - GUKDO Transition

Serial Number	Path Descriptor	Waypoint Identifier	Fly-over	Course/Track °M(°T)	Distance (NM)	Turn direction	Altitude (ft)	Speed (kt)	Coordinates	VPA/TCH	Navigation specification	Remarks
001	CF	BUKIL	-	060(052.41)	8.0	-	-	-220	364823.2 N 1273833.7 E	-	RNAV 1	CG 370 ft./NM to 6 000
002	TF	GUKDO	-	007(359.35)	12.78	-	+6 000	-	370110.9 N 1273822.9 E	-	RNAV 1	CG 370 ft./NM to 6 000

RNAV BUKIL 2 - OLMEN Transition

Serial Number	Path Descriptor	Waypoint Identifier	Fly-over	Course/Track °M(°T)	Distance (NM)	Turn direction	Altitude (ft)	Speed (kt)	Coordinates	VPA/TCH	Navigation specification	Remarks
001	CF	BUKIL	-	060(052.41)	8.0	-	-	-220	364823.2 N 1273833.7 E	-	RNAV 1	CG 370 ft./NM to 6 000
002	TF	TUTAE	-	330(322.50)	8.0	-	@6 000	-220	365444.4 N 1273229.4 E	-	RNAV 1	CG 370 ft./NM to 6 000
003	TF	OWING	-	240(232.44)	18.0	-	@6 000	-	364343.8 N 1271444.4 E	-	RNAV 1	-
004	TF	OLMEN	-	280(272.37)	12.29	-	+6 000	-	364413.4 N 1265927.6 E	-	RNAV 1	-

RNAV BUKIL 2 - BULTI Transition

Serial Number	Path Descriptor	Waypoint Identifier	Fly-over	Course/Track °M(°T)	Distance (NM)	Turn direction	Altitude (ft)	Speed (kt)	Coordinates	VPA/TCH	Navigation specification	Remarks
001	CF	BUKIL	-	060(052.41)	8.0	-	-	-220	364823.2 N 1273833.7 E	-	RNAV 1	CG 370 ft./NM to 6 000
002	TF	TUTAE	-	330(322.50)	8.0	-	@6 000	-220	365444.4 N 1273229.4 E	-	RNAV 1	CG 370 ft./NM to 6 000
003	TF	OWING	-	240(232.44)	18.0	-	@6 000	-	364343.8 N 1271444.4 E	-	RNAV 1	-
004	TF	BULTI	-	277(269.11)	20.3	-	+6 000	-	364322.3 N 1264929.7 E	-	RNAV 1	-

Change : Amended an error(BUKIL Coordinates), Establishment of GUKDO Altitude.

STANDARD DEPARTURE CHART
INSTRUMENT (SID)

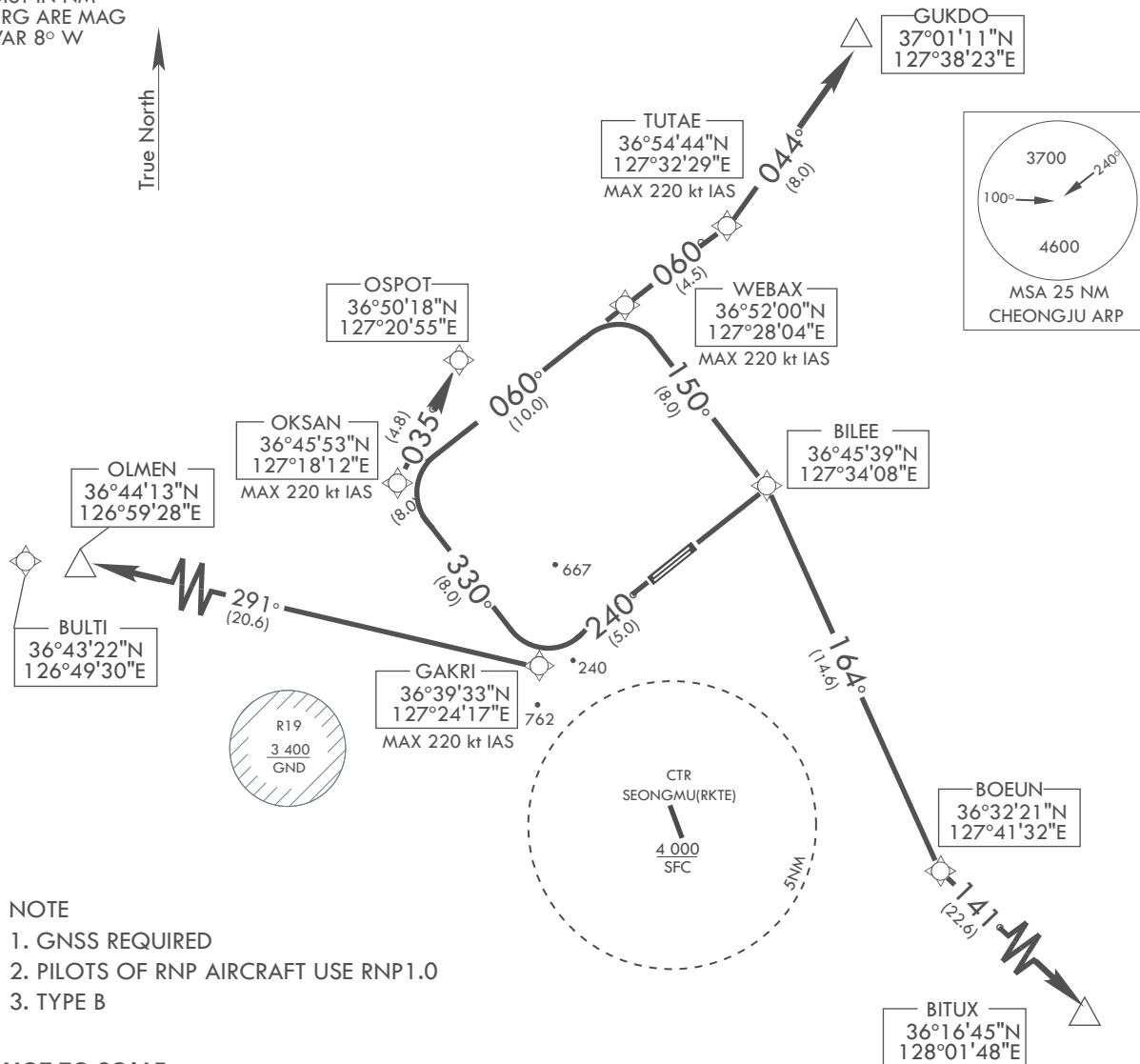
TRANSITION ALT 14 000
TRANSITION LVL FL 140

JUNGWON DEP 129.65 292.9
CHEONGJU TWR 118.7 249.6
126.2 236.6

CHEONGJU/Cheongju INTL
RWY 24R
RNAV(GNSS)-GAKRI 1

Note : Departure under U.S. TERPS.

ELEV, ALT IN FEET
DIST IN NM
BRG ARE MAG
VAR 8° W



- NOTE
1. GNSS REQUIRED
 2. PILOTS OF RNP AIRCRAFT USE RNP1.0
 3. TYPE B

NOT TO SCALE

DEPARTURE PROCEDURE ROUTE DESCRIPTION

TAKE OFF MINIMA : RWY 24R- STANDARD WITH ATC CLIMB OF 310 ft/NM TO 8 000 ft.

TAKE OFF RWY 24R : CLIMB ON 240DEG COURSE TO GAKRI, THENCE.....

..... VIA(TRANSITION). MAINTAIN 6 000 ft, EXPECTED FILED ALTITUDE 5 MINUTES AFTER DEPARTURE.

GUKDO TRANSITION (GAKRI 1. GUKDO) : 330DEG TRACK TO OKSAN, THEN VIA 060DEG TRACK TO TUTAE, THEN VIA 044DEG TRACK TO GUKDO.

OSPOT TRANSITION (GAKRI 1. OSPOT) : 330DEG TRACK TO OKSAN, THEN VIA 035DEG TRACK TO OSPOT.

OLMEN/BULTI TRANSITION (GAKRI 1. OLMEN/BULTI) : 291DEG TRACK TO OLMEN/BULTI, CROSS OLMEN/BULTI AT OR ABOVE 8 000 ft.

BITUX TRANSITION (GAKRI 1. BITUX) : 330DEG TRACK TO OKSAN, THEN VIA 060DEG TRACK TO WEBAX, THEN VIA 150DEG TRACK TO BILEE, THEN VIA 164DEG TRACK TO BOEUN, THEN VIA 141DEG TRACK TO BITUX.

INTENTIONALLY

LEFT

BLANK

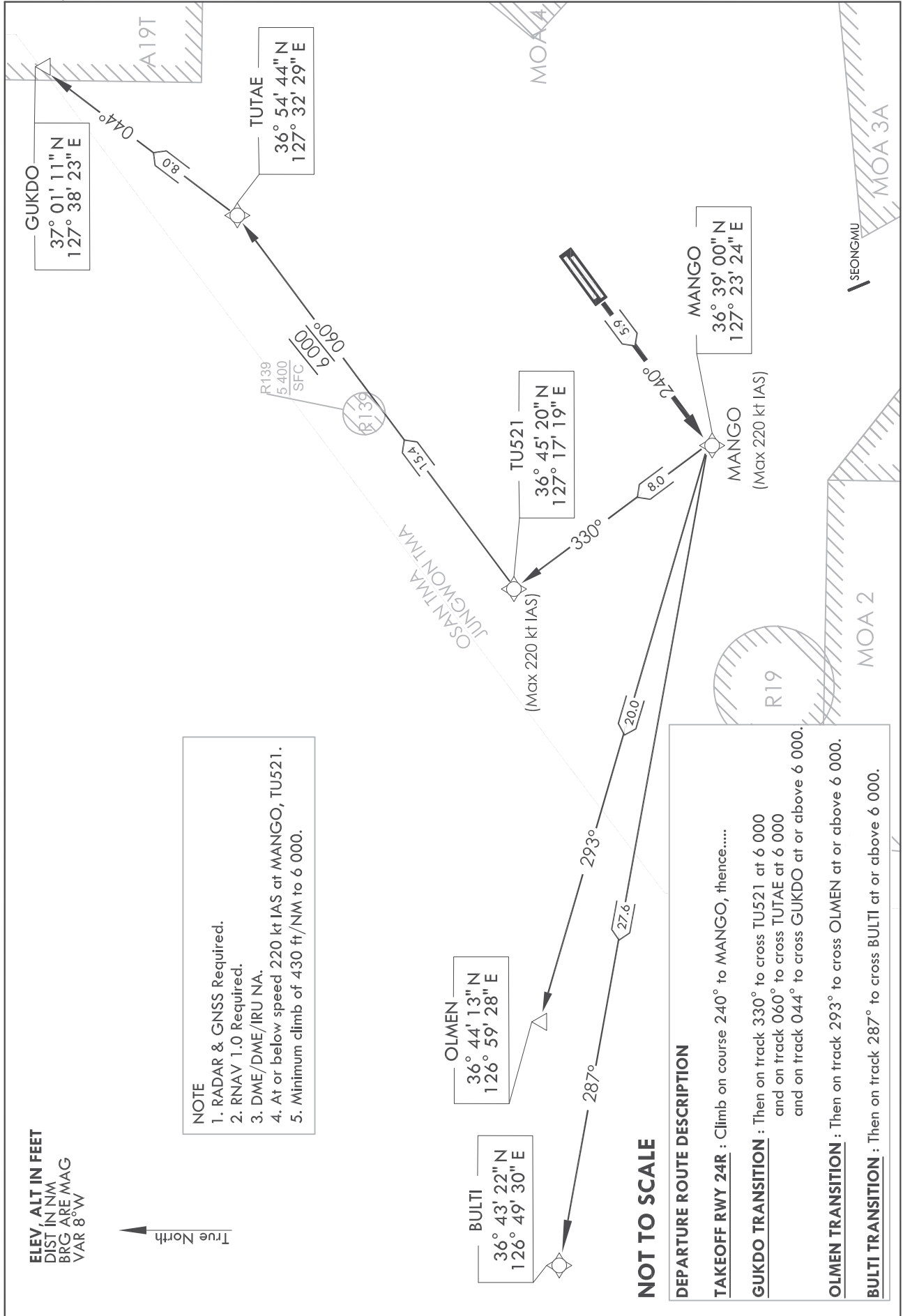
STANDARD DEPARTURE CHART
INSTRUMENT (SID) - ICAO

TRANSITION ALT 14 000
TRANSITION LVL FL 140

JUNGWON DEP 129.65
CHEONGJU TWR 118.7 126.2

CHEONGJU/Cheongju INTL
RWY 24R
RNAV(GNSS)-MANGO 1

Note : Departure under U.S. TERPS.



CHEONGJU/Cheongju INTL(RKTU)
RWY 24R
RNAV MANGO 1

AERONAUTICAL DATA TABULATION

Standard Instrument Departure Procedure Coding Tables

RNAV MANGO 1 - GUKDO Transition

Serial Number	Path Descriptor	Waypoint Identifier	Fly-over	Course/Track °M(°T)	Distance (NM)	Turn direction	Altitude (ft)	Speed (kt)	Coordinates	VPA/TCH	Navigation specification	Remarks
001	CF	MANGO	-	240(232.4)	5.9	-	-	-220	363859.7 N 1272323.8 E	-	RNAV 1	CG 430 ft/NM to 6 000
002	TF	TU521	-	330(322.34)	8.0	-	@6 000	-220	364519.8 N 1271719.1 E	-	RNAV 1	CG 430 ft/NM to 6 000
003	TF	TUTAE	-	060(052.27)	15.38	-	@6 000	-	365444.4 N 1273229.4 E	-	RNAV 1	-
004	TF	GUKDO	-	044(036.24)	7.98	-	+6 000	-	370110.9 N 1273822.9 E	-	RNAV 1	-

RNAV MANGO 1 - OLMEN Transition

Serial Number	Path Descriptor	Waypoint Identifier	Fly-over	Course/Track °M(°T)	Distance (NM)	Turn direction	Altitude (ft)	Speed (kt)	Coordinates	VPA/TCH	Navigation specification	Remarks
001	CF	MANGO	-	240(232.4)	5.9	-	-	-220	363859.7 N 1272323.8 E	-	RNAV 1	CG 430 ft/NM to 6 000
002	TF	OLMEN	-	293(285.29)	19.95	-	+6 000	-	364413.4 N 1265927.6 E	-	RNAV 1	CG 430 ft/NM to 6 000

RNAV MANGO 1 - BULTI Transition

Serial Number	Path Descriptor	Waypoint Identifier	Fly-over	Course/Track °M(°T)	Distance (NM)	Turn direction	Altitude (ft)	Speed (kt)	Coordinates	VPA/TCH	Navigation specification	Remarks
001	CF	MANGO	-	240(232.4)	5.9	-	-	-220	363859.7 N 1272323.8 E	-	RNAV 1	CG 430 ft/NM to 6 000
002	TF	BULTI	-	287(279.28)	27.62	-	+6 000	-	364322.3 N 1264929.7 E	-	RNAV 1	CG 430 ft/NM to 6 000

Change : Amended an error(OLMEN Coordinates), Establishment of TU521 Altitude.

**STANDARD DEPARTURE CHART
INSTRUMENT (SID) - ICAO**

TRANSITION ALT 14 000
TRANSITION LVL FL 140

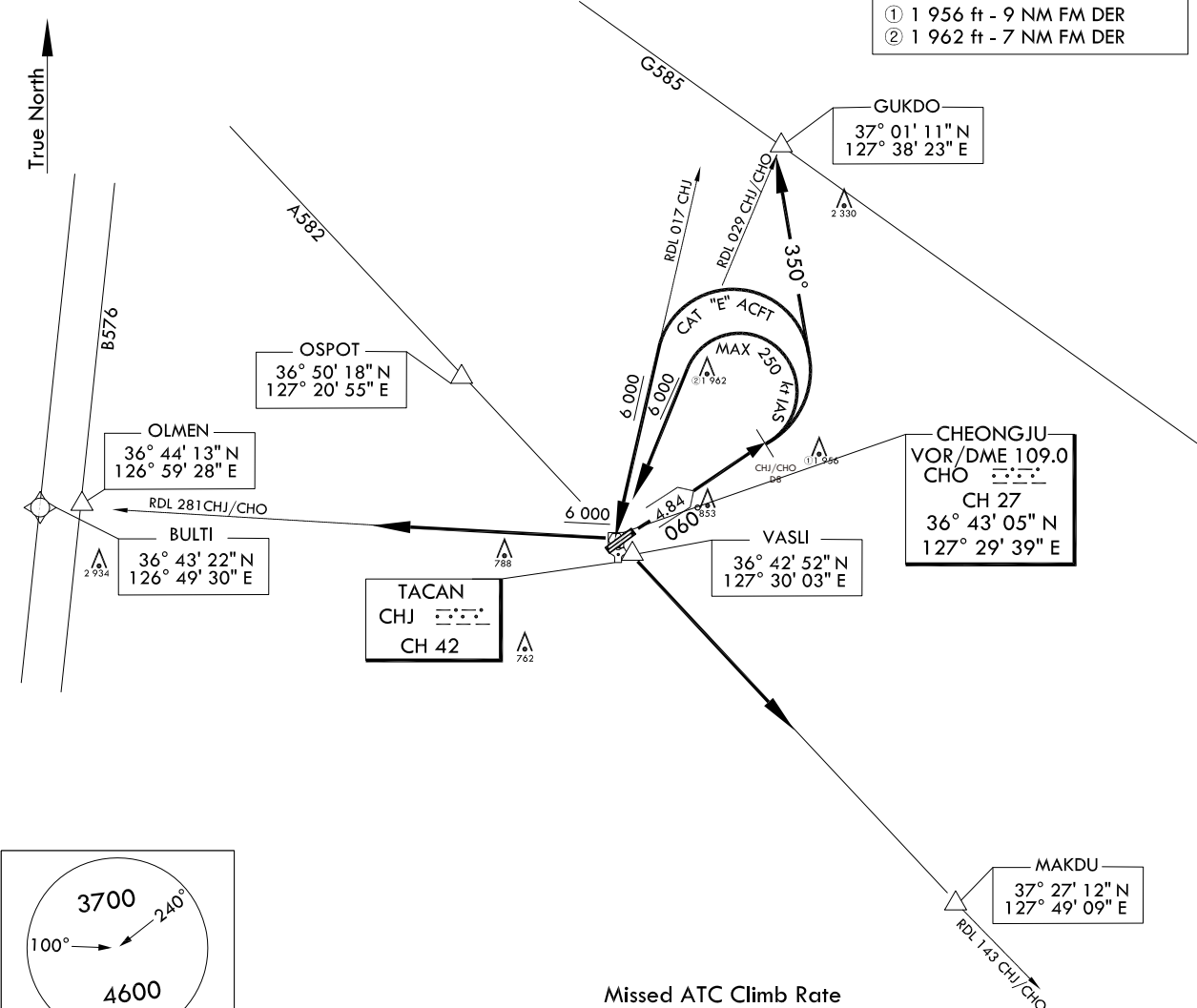
JUNGWON DEP 129.65 239.4
CHEONGJU TWR 118.7 126.2

**CHEONGJU/Cheongju INTL(RKTU)
RWY 06L/R
CHEONGJU 7**

Note : Departure under U.S TERPS.

ELEV, ALT IN FEET
DIST IN NM
BRG ARE MAG
VAR 8°W

NOTE
1. CAT "E" ACFT use RDL 017 CHJ
2. CONTROLLING OBST
① 1 956 ft - 9 NM FM DER
② 1 962 ft - 7 NM FM DER



Missed ATC Climb Rate

KNOTS	60	120	180	240	300	TO
V/V(fpm)	350	700	1 050	1 400	1 750	6 000

DEPARTURE PROCEDURE DESCRIPTION

CHEONGJU 7 DEPARTURE

RWY 06L/R : Climb HDG 060° to CHJ/CHO 8 DME, then left turn thence.....

GUKDO transition

: Turn left HDG 350° for interception RDL 029 CHJ/CHO, then track outbound RDL 029 CHJ/CHO to GUKDO maintain 8 000 ft or assigned altitude by ATC.

MAKDU transition

: Turn left for interception RDL 017 CHJ/RDL 029 CHO to CHJ/CHO and at or above 6 000 ft, then track outbound RDL 143 CHJ/CHO to MAKDU maintain 8 000 ft or assigned altitude by ATC.

OLMEN/BULTI transition

: Turn left for interception RDL 017 CHJ/RDL 029 CHO to CHJ/CHO and at or above 6 000 ft, then track outbound RDL 281 CHJ/CHO to OLMEN/BULTI maintain 7 000 ft or assigned altitude by ATC.

Change : New procedure.

INTENTIONALLY

LEFT

BLANK

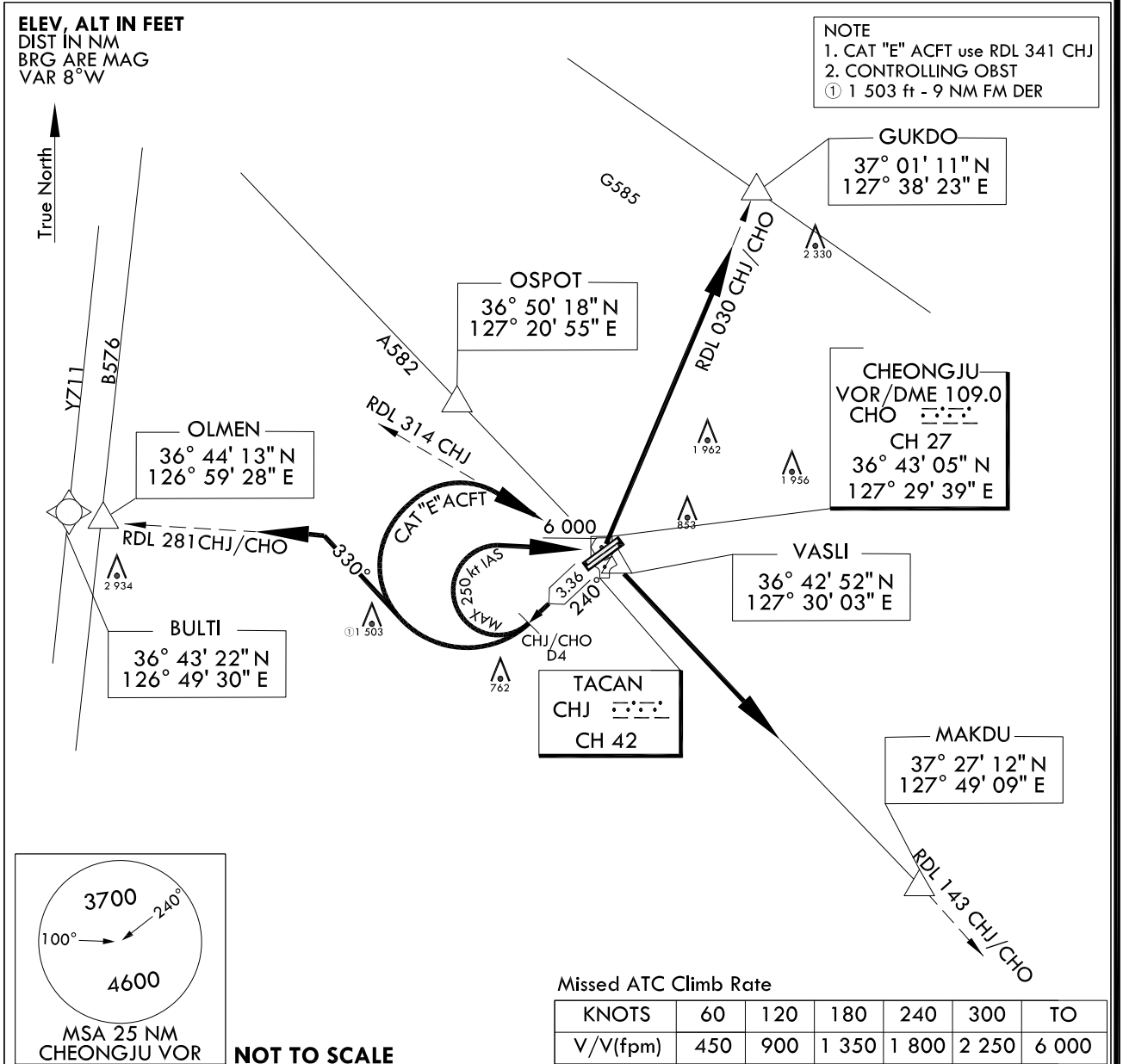
**STANDARD DEPARTURE CHART
INSTRUMENT (SID) - ICAO**

TRANSITION ALT 14 000
TRANSITION LVL FL 140

JUNGWON DEP 129.65 239.4
CHEONGJU TWR 118.7 126.2

**CHEONGJU/Cheongju INTL(RKTU)
RWY 24L/R
CHEONGJU 8**

Note : Departure under U.S TERPS.



DEPARTURE PROCEDURE DESCRIPTION

CHEONGJU 8 DEPARTURE

RWY 24L/R : Climb HDG 240° to CHJ/CHO 4 DME, then right turn for the following routes.

- GUKDO transition** : Turn right for interception RDL 341CHJ/RDL 281 CHO to CHJ/CHO and at or above 6 000 ft, then track outbound RDL 029 CHJ/CHO to GUKDO maintain 8 000 ft or assigned altitude by ATC.
- MAKDU transition** : Turn right for interception RDL 314 CHJ/RDL 281 CHO to CHJ/CHO and at or above 6 000 ft, then track outbound RDL 143 CHJ/CHO to MAKDU maintain 8 000 ft or assigned altitude by ATC.
- OLMEN/BULTI transition** : Turn right HDG 330° for interception RDL 281 CHJ/CHO, then track outbound RDL 281 CHJ/CHO to OLMEN/BULTI maintain 8 000 ft or assigned altitude by ATC.

Change : New procedure.

INTENTIONALLY

LEFT

BLANK

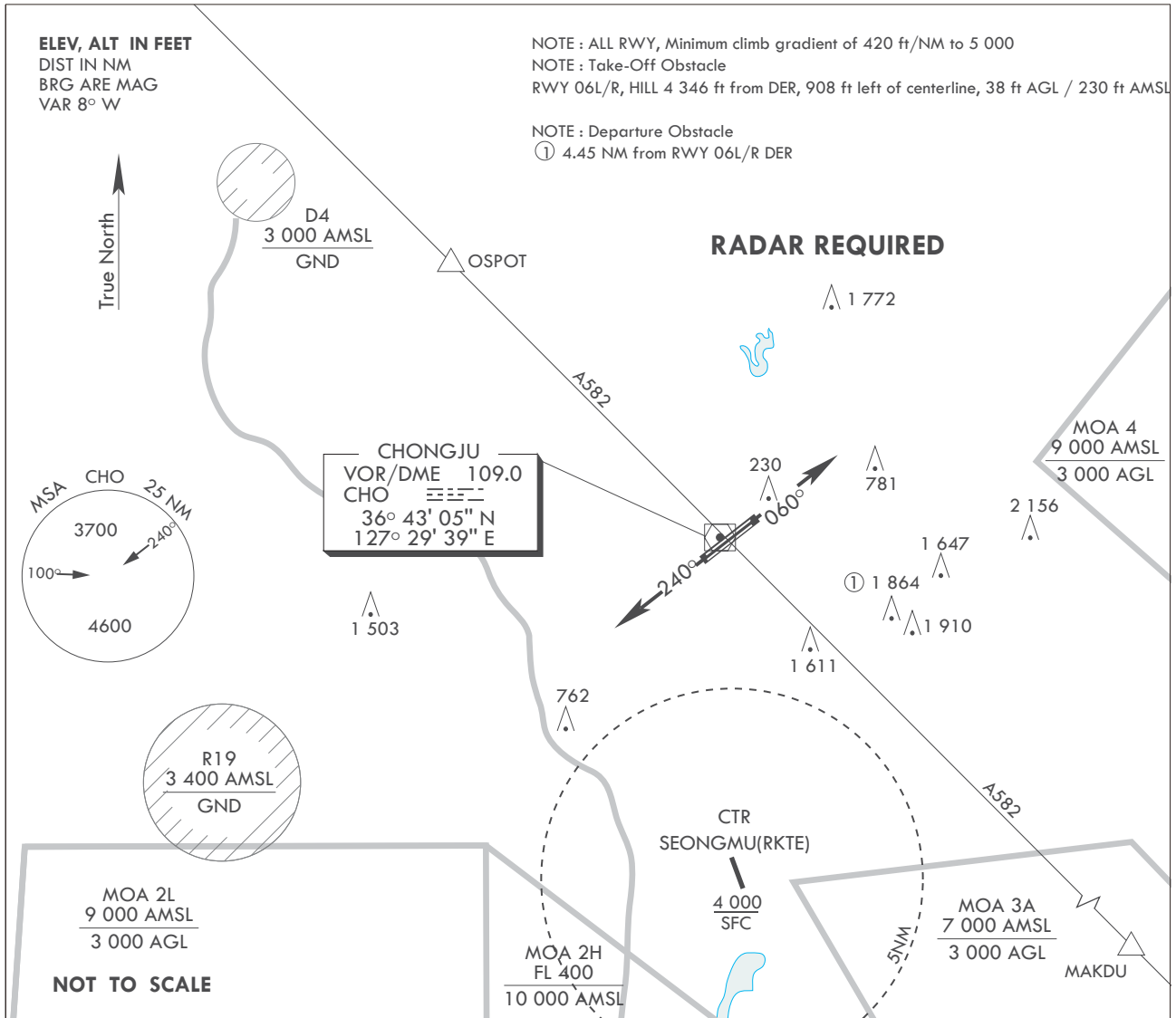
STANDARD DEPARTURE CHART -
INSTRUMENT (SID)

TRANSITION ALT 14 000
TRANSITION LVL FL 140

JUNGWON DEP 129.65 292.9
CHEONGJU TWR 118.7 249.6
126.2 236.6

CHEONGJU/Cheongju INTL
RWY 06L/24R
CHEONGJU 1D

Note : Departure under U.S. TERPS.



DEPARTURE PROCEDURE DESCRIPTION

NOTE : ALL RWY, Minimum climb gradient of 420 ft/NM to 5 000

TAKEOFF RWY 06R/L : Climb heading 060, Thence.....

TAKEOFF RWY 24R/L : Climb heading 240, Thence.....

.....Expect radar vectors to intercept filed Enroute fix or Navaid.
Maintain 6 000 or assigned altitude(flight level).
Expect filed altitude/flight level within 10 minutes after departure.

LOST COMMUNICATIONS : If radio contact is not established with departure control
prior to reaching 5 000, Continue climbing and proceed filed route
and altitude.

Change : Withdrawal of A815.

INTENTIONALLY

LEFT

BLANK